



ST FAITH AND ST MARTIN
CHURCH OF ENGLAND JUNIOR SCHOOL

Who's who?



Mrs Hancock



Mrs Manning



Miss Shannon



Mr Kyle
Headteacher



Mrs Charlton
Deputy Headteacher –
Pupil Premium
Champion/Teaching &
Learning



Miss Brighton
SENDCO & Pastoral
Support



Mr Sime
Assistant Headteacher
- Teaching and
Learning



Mrs Curtis
Pastoral &
Safeguarding Lead

Our Vision Statement

To deliver the highest quality of education for our pupils by providing a safe and stimulating environment, which empowers pupils to maximise their personal, spiritual, creative and academic potential in order to become lifelong learners.



ST FAITH AND ST MARTIN
CHURCH OF ENGLAND JUNIOR SCHOOL

Theological Underpinned

'Behold, how good and how pleasant it is for us to dwell together in unity'

(Psalms 133:1)

Our Motto

We are a team that achieves amazing things everyday!



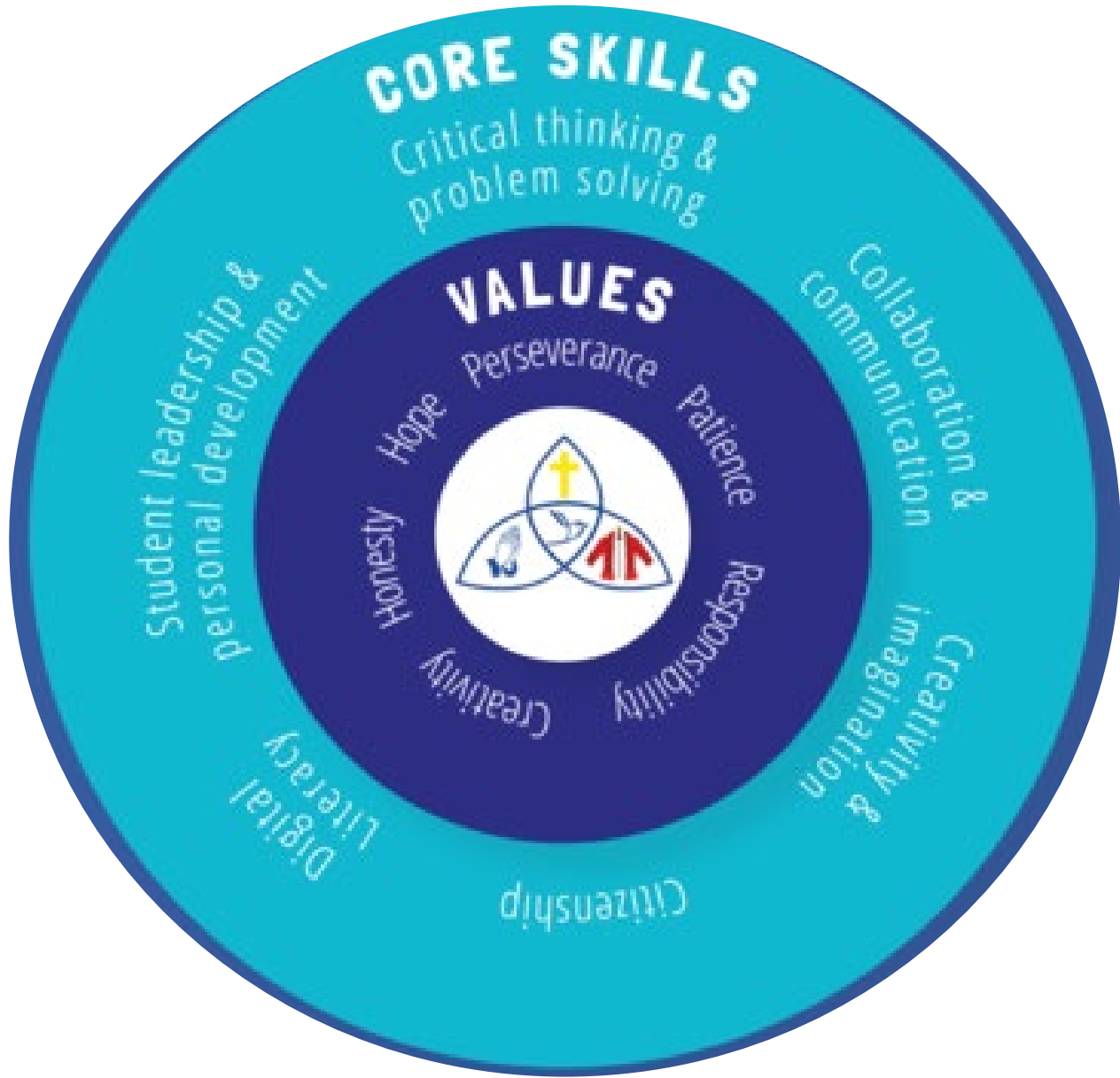
ST FAITH AND ST MARTIN
CHURCH OF ENGLAND JUNIOR SCHOOL

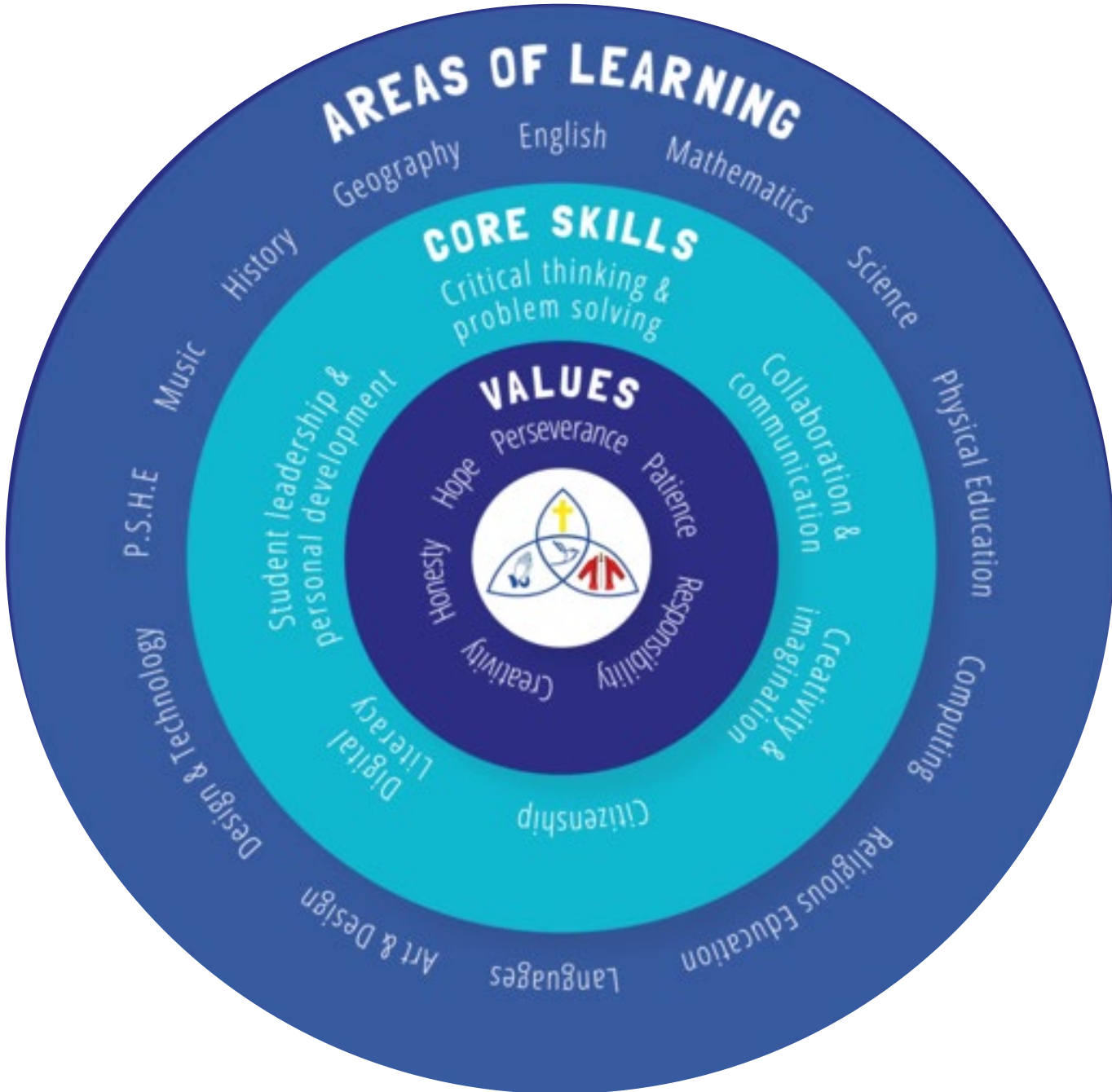


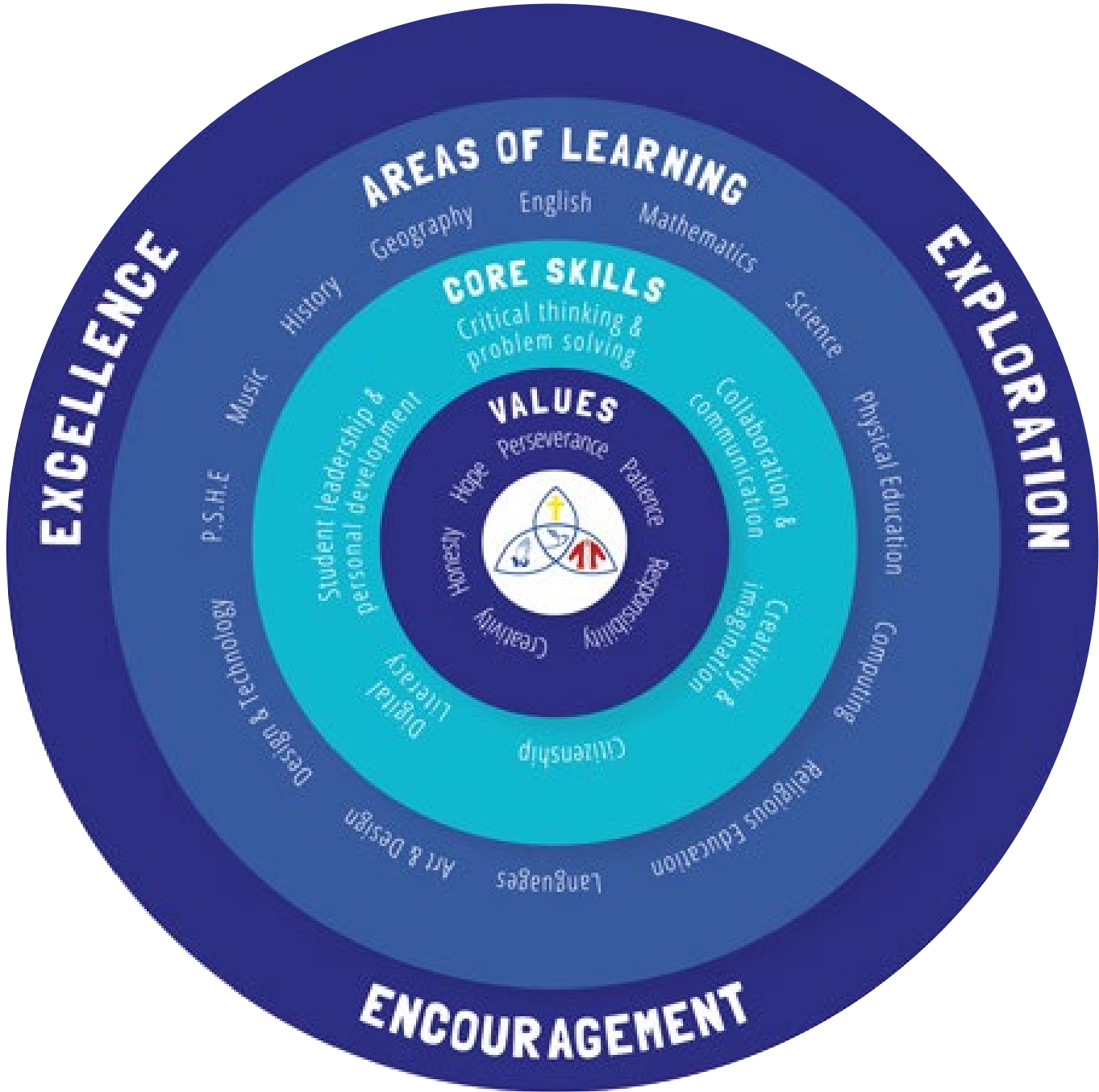
VALUES

- Honesty
- Hope
- Perseverance
- Patience
- Responsibility
- Creativity
- Honesty









EXCELLENCE

EXPLORATION

ENCOURAGEMENT

AREAS OF LEARNING

English
Mathematics
Science
Physical Education
Computing
Religious Education
Languages
Art & Design
Design & Technology
P.S.H.E
Music
History

CORE SKILLS

Critical thinking & problem solving
Collaboration & communication
Creativity & imagination
Citizenship
Digital literacy
Student leadership & personal development

VALUES

Perseverance
Patience
Responsibility
Creativity
Honesty
Hope
Respect





**CHURCH OF ENGLAND
JUNIOR SCHOOL**

















Creativity

Honesty

Patience



Hope

Responsibility

Perseverance

ST FAITH AND ST MARTIN

CHURCH OF ENGLAND JUNIOR SCHOOL

This learning journal belongs to:

Class teacher:



Our Church School Values:

**- Perseverance – Patience – Responsibility -
– Creativity – Honesty – Hope –**

Hometime Collection

Parents – please complete the form below, advising us of hometime collection arrangements for your child.

If arrangements change on a particular day, for example if another parent is collecting your child, please let the class teacher or school office know **in advance.**

To ensure your child is always safe, we are unable to let them go home with anyone other than people you have authorised.

My child will be collected by the following people/childcare providers:

Monday:

Tuesday:

Wednesday:

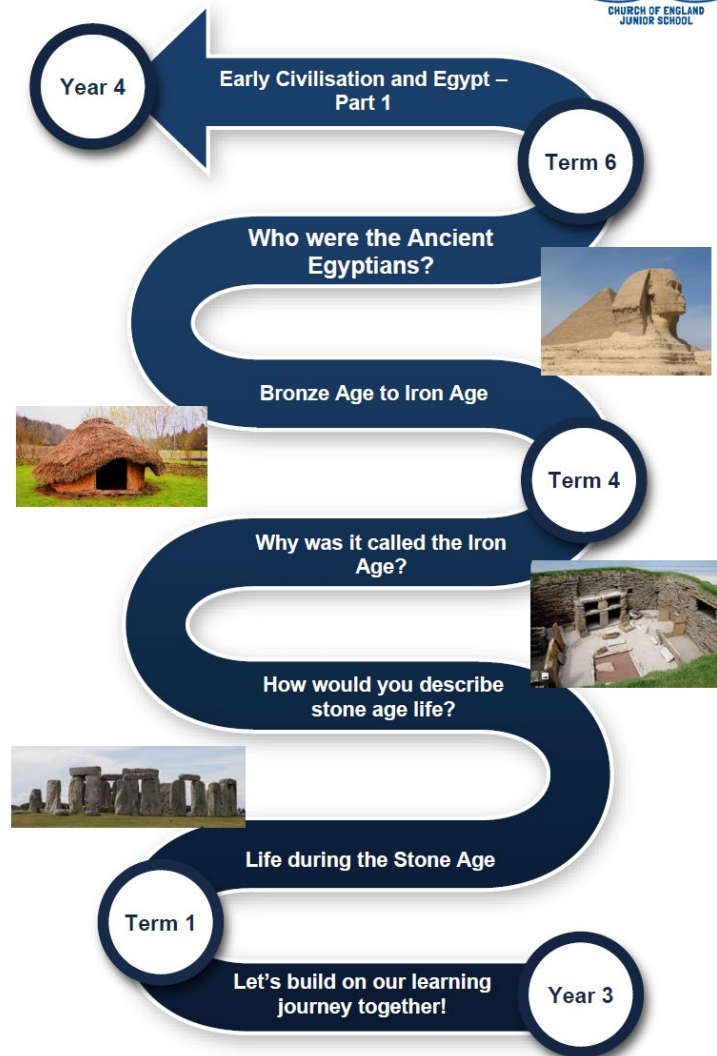
Thursday:

Friday:

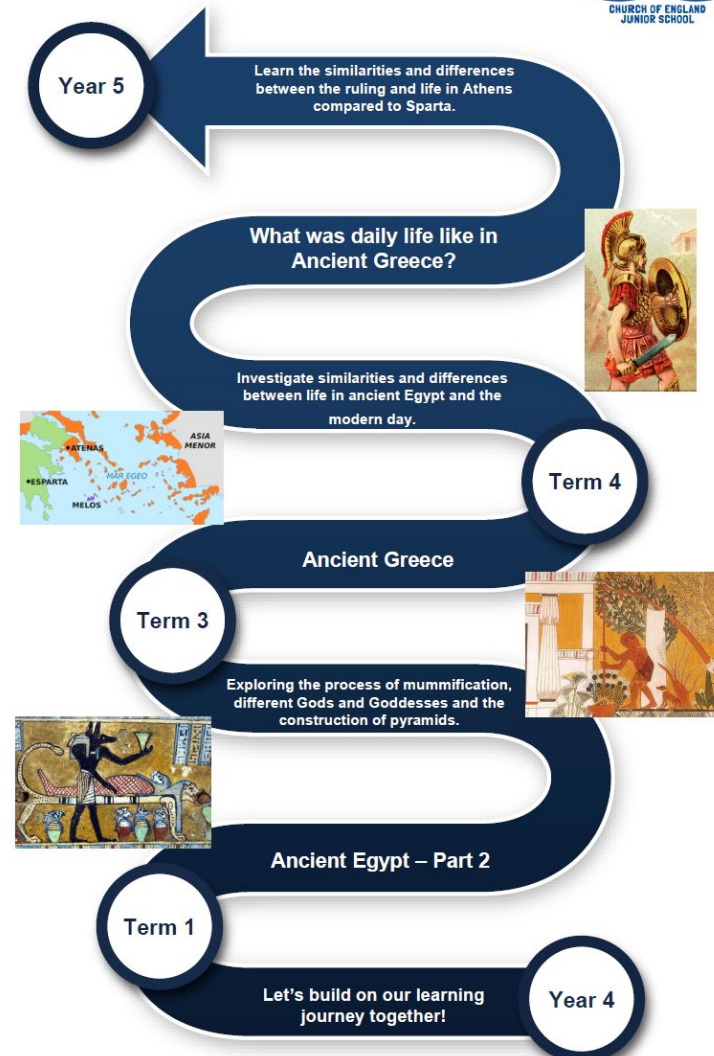
Parent's/Carer's Signature: _____

Making sure you are aware of what your child will learn during the year – handy for present ideas 😊

Year 3 History Learning Journey



Year 4 History Learning Journey



Making sure you are aware of what your child will learn during the year – handy for present ideas 😊

Year 5 History Learning Journey



Year 6

Anglo-Saxons & Vikings

Term 6

Romans & Scots

Term 5

Explore what life was like as an Anglo-Saxon and why the Vikings settled in Britain.



Romans

Term 4

Explore the formation, rise and power of the Roman army.



Mayans

Term 3

Let's build on our learning journey together!

Year 5



Year 6 History Learning Journey



Year 7

How long did World War 2 last?

How did the blitz impact families?

Explore why World War Two broke out and how it impacted the world.

World War 2

Term 3

Tell me about William the Conqueror.

Vikings & Normans

Term 1

Let's build on our learning journey together!

Year 6





sfsmsport @sfsmsport · 3d
 @sfsmtweets @AldiUK We did it! A team that achieves amazing things every day. Now to send off our poster and keep our fingers crossed for the big prize #teamwork



1 3 17



SFSM_Y5 @SFSM_Y5 · 4d
 @sfsmtweets @RevJulieStFaith At the going down of the sun and in the morning We will remember them #stfaithsfamily



1 3 7



SFSM_Y6 @SFSM_Y6 · 4d
 And now, we wait #patience @sfsmtweets @SfsmValues



1 1 4



St Faith & St Martin Ju... · 18/10/2019
 Well done to our value medal winners today 🏅 😊



3 17

Close collaborative relationships between the school, church, and St Faith's infant school enable the nurturing community to work together for the benefit of the pupils.

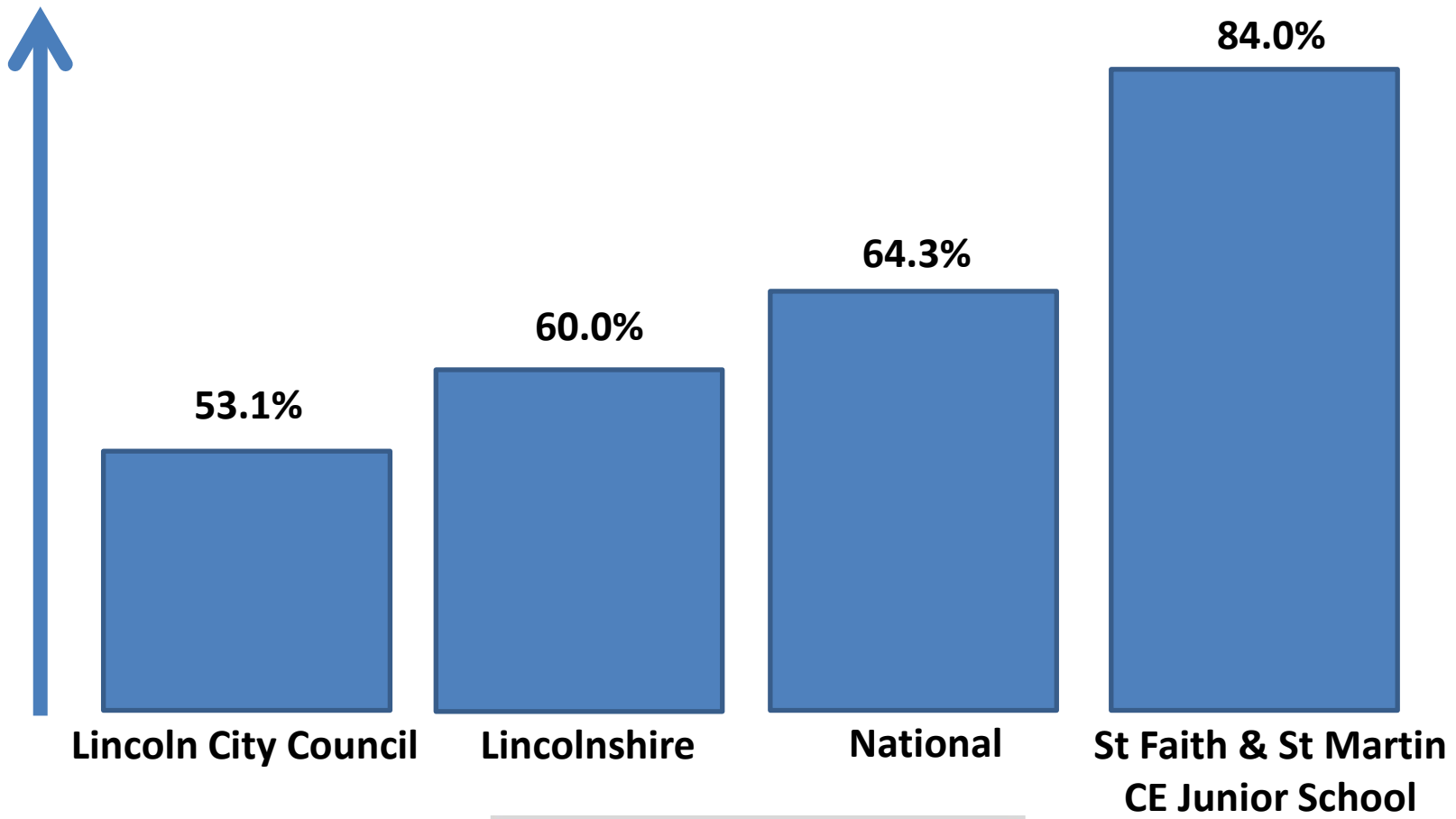
Since the last inspection, excellent collaborative partnerships have developed between the school, church, and St Faith's infant school. They support one another to ensure that all pupils can achieve their potential and have marketed the group as the 'St Faith family.'

Outstanding Church School Transition



A joint Ethos and Values Committee meets regularly and this closer co-operation between Infant and Junior Schools helps ensure a seamless transition and experience for children between the two schools. A Year 3 teacher from the Junior School, for example, explained how she is impressed by the confident way in which St Faith's children reflect on their experiences.

High Academic Standards



Behaviour Policy



We hope you will:
Be kind and thoughtful to everyone
Be honest: take responsibility for your actions
Care for our school environment
Walk quietly and sensibly around school
Respect each other: be prepared to listen
Persevere: work hard and think creatively

Breaking school rules:
Unkind comments
Talking on the way to assembly or in the line.
Lack of respect e.g. shrugging shoulders, rolling eyes, walking away.
Disturbing others
Calling out, talking over others
Lack of respect for resources
Answering back
Running in school
Banned items in school

Repeated AMBER behaviour
Stopping others from learning
Physical aggression
Verbal aggression
Swearing
Deliberate rudeness
Stealing
Refusing to work
Refusing to follow instructions
Breaking resources

What are the timings for the start and end of day?

- The school gates will open at 8:35am for our Year 3 pupils from September.
- Collection will be at 3:05pm from the school playground.

What after school clubs are available for my child?

- We have a variety of After School Clubs
- A ParentMail letter will be given out in September to confirm what is on offer.
- The same booking system – Coordinate - as used at St Faith CE Infant School.
- Clubs change on a termly basis – but we hope to offer gymnastics, art and football as well as 'The Saints' and other seasonal clubs.

What after school clubs are
available for my child?



What equipment does my child need in school?

- Book bag (or equivalent). This should be brought every day.
- PE kit -plain white T-shirt with or without emblem, black or navy shorts, trainers for outdoor PE. This should be in school every Monday morning and taken home each Friday.
- During the winter months, the children will also need a black or navy track suit or equivalent and trainers as weather permitting the children have one indoor and one outdoor PE session a week. New school hoodies are also available.

What equipment does my child need in school?

- Water Bottle with a sports top and the drink is water.
- Snack. Your child may bring a healthy snack to eat at play time. E.g. a piece of fruit. This needs putting in your child's locker at the beginning of the day. Please do not leave it in their lunch box.

How can I order a school dinner?

- School dinners are provided by Good Lookin' Cookin' and are delivered fresh to the school each day.
- Meals cost £2.40 each. ([Apply for free school meals – Lincolnshire County Council](#))
- You can sign up for as many or as few days as you want to each week. It is the same process at your infant schools.
- Orders need to be done online www.goodlookincookin.co.uk

What happens at Lunch time?

- At lunch time the children will wash their hands and head across to our hall for lunch.
- Each class has a designated lunch-time supervisor.
- Lunch is served to Year 3 children from 11:40-12:35. Once they have enjoyed their healthy lunch, they begin their lunchtime play.
- Weather permitting, packed lunches are eaten outside as a picnic on the terrace.
- After eating their lunch, there are extra activities and sports (football, basketball, skipping, short tennis, chess etc) for the children to get involved in along the different terraces.

What rewards do we have to work towards?

- Attendance trophies- Silver and Gold
- Eco Trophy/Eco Jeff 😊
- Recycling award
- V.I.P. Top table for lunch
- Team points
- Star of the Week
- Gold Stars & Gold Star Treat
- Head teacher's awards



What homework will my child be expected to complete and how can I help?

- Reading at least x3 per week
- Spellings
- Maths homework which can include recall of facts
- English/topic based homework
- Holiday research projects (optional)
- Homework should not take longer than 30 minutes because they will be practising skills they have learned in class.



The Year 3 Curriculum!

➤ The Stone Age



The Year 3 Curriculum!

➤ The United Kingdom!



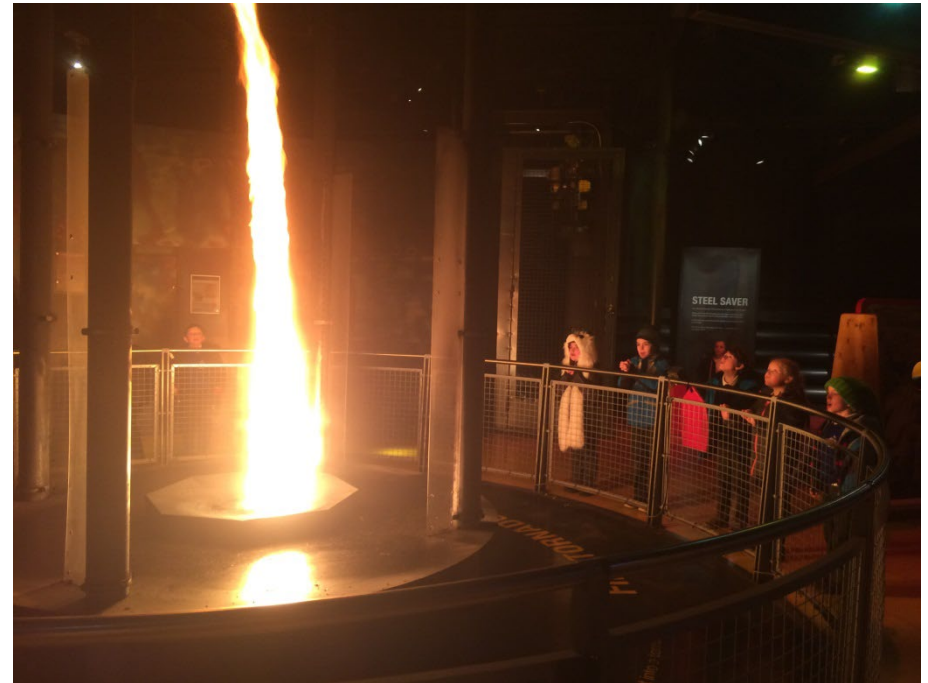
The Year 3 Curriculum!

- Panto Pandamonium 😊



The Year 3 Curriculum!

➤ Volcanoes



This Photo by Unknown author is licensed under [CC BY-NC](https://creativecommons.org/licenses/by-nc/4.0/).

The Year 3 Curriculum!

➤ Bronze Age & Iron Age



The Year 3 Curriculum!

➤ Countries & Characteristics



The Year 3 Curriculum!

➤ Early Civilisations & Ancient Egypt



What happens next?

➤ Transition session 10:00am-11:30am:

Monday 17 th June	Spiders & Mount Street
Tuesday 18 th June	Glow-worms & St Peters at Eastgate
Wednesday 19 th June	Dragonflies & Other schools

Transition full day 8:35am-3:05pm Tuesday 3rd September: Exclusively for Year 3 pupils – Bring a pack up :)

- W/C 20th May – Miss Brighton, SENDCO to begin visits to feeder schools to discuss children's academic ability/support with current SENDCO/Year 2 teachers.
- Current and next teacher meetings will also take place.



Tel: 01522 528063

Twitter: @sfsmtweets

Website: www.sfsm.co.uk

Email: enquiries@sfsm.lincs.sch.uk

ST FAITH AND ST MARTIN

CHURCH OF ENGLAND JUNIOR SCHOOL



One last thing...



- Enhanced music provision at SFSM from the start of Year 3.
- Trim trail and climbing frame installed at the start of this year.



St Faith and St Martin C of E Junior School

Play Project option 2: Adventure Trail



Adventure Play Equipment



An expansive adventure trail features a bespoke detail for your school, and provides loads of room for your pupils to explore together in PE lessons and breaktimes. 10 different activities provide a well-rounded challenge for gross- and fine-motor skills along with balance, co-ordination and agility to help your pupils grow healthy and strong through play

St Faith and St Martin C of E Junior School

Play Project option 1: Twig Hill climbing frame



Twig Hill is ideal for promoting development of fine-motor skills like grip-and-grasp with its challenging rope activities, whilst the angled log ladders also help with gross-motor skill development and overall body strength. The jaunty design also aids with balance, coordination and agility development, making Twig Hill the perfect climber for your pupils to grow whilst they play.

All rope colours are customisable, giving you the opportunity to involve your stakeholders in the design of the play area and create something completely unique for your school

Twig Hill offers a thrilling free-form adventure for huge numbers of children to play and explore together. Multiple Log and Rope Ladders intersect to create a multi-level climbing challenge that culminates at the 1.5m high Play Deck, which is also accessible via a Scramble Net and Rope Ladder and offers an exciting vantage point over the entire play area. From here your pupils can set off along the Parallel Ropes, Slalom Net, Triangular Traverse Net and Trapeze Hoop (as requested), trying not to touch the ground!

In line with our discussions we have priced for a stone foundation beneath the black wetpour rubber surface, in order to provide a long-term solution for all-weather access and safety surfacing





Tel: 01522 528063

Twitter: @sfsmtweets

Website: www.sfsm.co.uk

Email: enquiries@sfsm.lincs.sch.uk

ST FAITH AND ST MARTIN

CHURCH OF ENGLAND JUNIOR SCHOOL